



COLTLITE CL3 NSHEV LOUVRED VENTILATOR

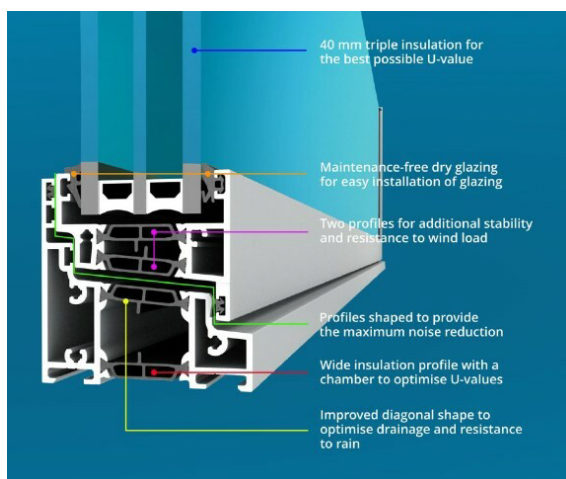
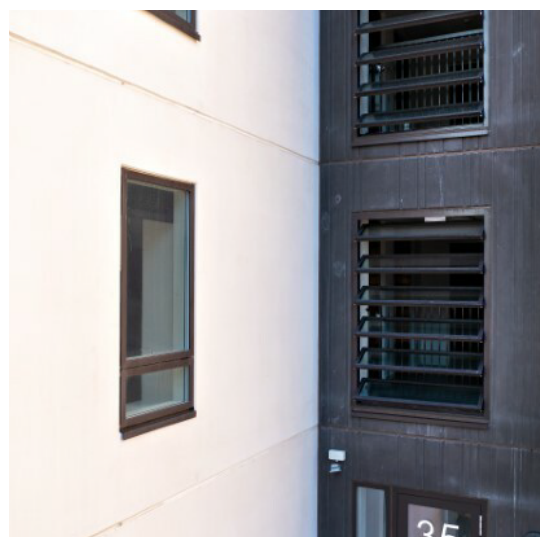
DATA SHEET

WHAT THIS UNIT IS USED FOR:

The Coltlite CL3 is a natural ventilator. It provides natural inlet and exhaust air as well as allowing natural daylight entry, and can also provide natural smoke extract in the event of a fire.

APPLICATIONS:

The Coltlite CL3 is distinguished by its sophisticated and energy-efficient design. It's especially suited for commercial buildings, offices, shopping centres, laboratories and ultra-modern industrial buildings.



FEATURES AND BENEFITS:

Very good performance classes to EN 12101

- B400 class for resistance to heat
- Excellent aerodynamic performance

Very good properties to EN 14351-1

- Sound attenuation of up to 45 dB
- Uw value up to 1.0 W / m²K
- Tested safety class 5 to EN 13049

*We believe people deserve to work & live
in safe & beautiful buildings.*



T. 1300 665 471
www.smokecontrol.com.au





DESCRIPTION OF THE PRODUCT

The Coltlite CL3 is used for day-to-day ventilation and smoke extraction. It has been certified to EN 12101-2 and tested to EN 14351-1.

The Coltlite CL3 can be used to provide natural ventilation and allow the entry of daylight into offices, factories and other commercial buildings such as shopping centres, for example. In addition the ventilator can also be used for fire ventilation and for smoke extraction from escape and rescue routes.

The Coltlite CL3 is designed for vertical installation into exterior glass walls and glass, steel or wood façades. The ventilator is delivered either with its louvres already built-in or on request with separately packed louvres. This means that one can take a flexible approach to installing the unit, depending on the circumstances on site. The louvres may be quickly and easily attached to the frames. No tools are needed.

The ventilator profiles are made of corrosion-resistant, extruded EN AW-6063 aluminium with rolled polyamide insulation with a fusible wire inlay. The Coltlite CL3 is available either powder-coated to any RAL colour or anodised. Special flange types are available on request.

TECHNICAL DESCRIPTION

Dimensions:

Frame width: 350 mm to 2500 mm
(in mm increments)
Frame height: 323 mm to 3000 mm
(in mm increments)
Louvre height: 279 mm to 500 mm
Frame face width: 50 mm
Vertical frame depth: 93 mm

TECHNICAL DESCRIPTION

- Infill thickness 40 mm
- Insulated (double or triple) glazing
- with Ug-values of up to 0.5 W/m²K
- Composite panels

ACTUATORS

The Coltlite CL3 ventilator can be opened and closed either manually, electrically or pneumatically, by one or two actuators per unit. Electric actuators with options for infinitely variable controls or reduction of the risk of finger trapping are available.

The following actuators are available:

- Lever handle
- 24 VDC and 230 VAC electric actuators. Various electric actuators are available. The standard variants are painted in the same colour as the frame.
- Double acting cylinder





DATA SHEET

Coltite CL3



KEY FEATURES

- Sound attenuation value for Coltite CL3 **45 dB***
- **Optimised Uw value** up to 1.0 W/m² K*
- Tested safety to EN 13049 achieving the highest possible **class 5***
- Tested for resistance to heat to **B400-E***
- **85°** opening angle
- **EN 12101-2** tested and certified to TÜV
- Tested to the **EN 14351-1** classification for windows and doors
- Resistance to wind load (to EN 12210): **CLASS C5***
*Depending on the variant selected

CLASSIFICATIONS

Classifications to the EN 12101-2 standard

Characteristic	Classifications
Effective aerodynamic area (C _{v0} value)	Up to 0.62*
Reliability/live cycle test	RE 1000 dual purpose (+10000)
Low ambient temperature	Up to T(-20)***
Wind load	Up to WL 6000*
Resistance to heat	B 400-E***

Classifications to the EN 14351-1 standard

Characteristic	Classification
Resistance to wind load	C5/B5*
Weather resistance	Class 7A*
Air permeability	Class 4*
Impact resistance	Class 5**
Acoustic performance	Up to R _w = 45 dB**
Thermal insulation	U _w value up to 1.0 W/m ² K**

* Depending on the dimensions

** Depending on the dimensions and type of infill

*** Depending on the drive type



We believe people deserve to work & live in safe & beautiful buildings.

1300 665 471 | info@smokecontrol.com.au | www.smokecontrol.com.au

