



APOLLO NATURAL SMOKE AND DAY-TO-DAY VENTILATOR

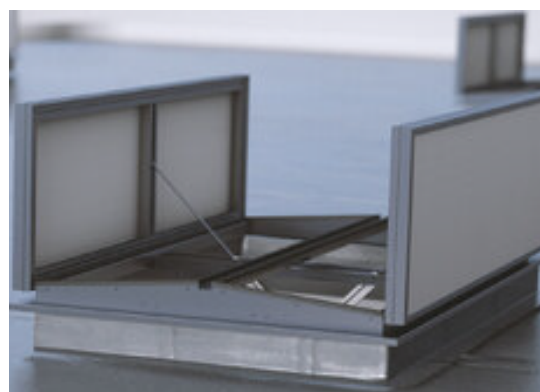
DATA SHEET

PRODUCT FUNCTIONS:

Apollo is a natural ventilator providing automatic smoke ventilation and day-to-day ventilation. Natural daylight can enter through its flap. It has been tested to EN 12101-2.

PRODUCT APPLICATIONS:

This smoke ventilator is suitable for use in commercial, industrial and municipal premises.



FEATURES AND BENEFITS:

- The Apollo meets the requirements of the EnEV (energy saving regulation)
- Up to a maximum width x length of 2500 x 3000 mm available in mm increments
- High volume smoke extraction
- Outstanding U-values
- Low weight
- Low initial costs
- Available in an insulated version
- Low assembly costs
- A wide choice of colours

We believe people deserve to work & live in safe & beautiful buildings.



T. 1300 665 471
www.smokecontrol.com.au





DESCRIPTION OF THE PRODUCT

Apollo is a natural ventilator providing automatic smoke ventilation and day-to-day ventilation. Natural daylight can enter through its flap. It has been tested to EN 12101.2 and complies with AS2665 for Smoke Vents.

It is manufactured completely from high quality components. Its principal component is corrosion-resistant aluminium (AlMg3).

The unit has EPDM seals set into profiles which run right round the base.

This precludes the risk of the seals being ripped out when the ventilator opens. This also minimises air leakage.

The Apollo ventilator flaps have either insulated aluminium panels or various kinds of polycarbonate multi-wall sheets and are clamped into frames made of extruded aluminium profiles.

THE FOLLOWING FLAP VARIANTS ARE AVAILABLE:

- 7-layer 16 mm PC (transparent/opaque/ grey/ grey)
- PC16 7 IR grey (good balance between light entry and energy transmission)
- PO16 H (hail-resistant PC sheet)
- PC16 21 (6 mm massive sheet, 10 mm PC sheet)
- PC32 mm (transparent/opaque)
- A2 double skin aluminium flap

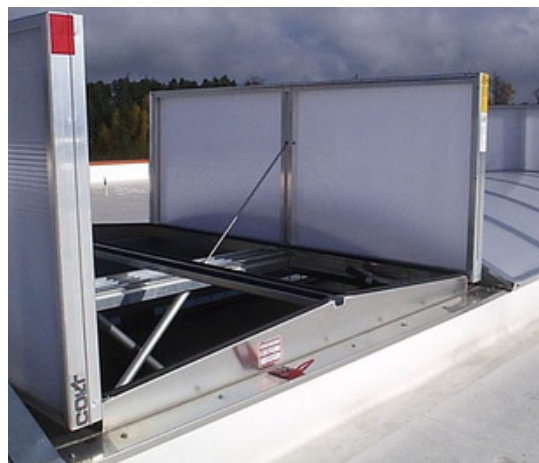
The outside of the PC sheet is co-extruded ("long-life") to optimise weather resistance. The sheets are installed in such a way that thermal expansion is allowed for, and so there is no damage from screwing through them. Available in many different sizes and base types which makes it easy to fix it onto upstands and all kinds of roofs. Lightweight components reduce installation costs.

Its high quality and low maintenance design make it particularly energy-efficient.

Hinges are made of thick stainless steel specially developed for the system. These ensure that the unit functions safely and correctly. The control channels are made from extruded aluminium. The rain channels are aerodynamic in shape. The ventilator base is single-skin as standard. A double-skin base with insulation is also available.

Apollo ventilators are opened and closed by means of double acting cylinders, 24 V electric actuators, or 230 V electric actuators.

Compared to 24 V drives, 230 V drives enable the unit to open more quickly as well as offering noticeable cost savings where cable distances are long.

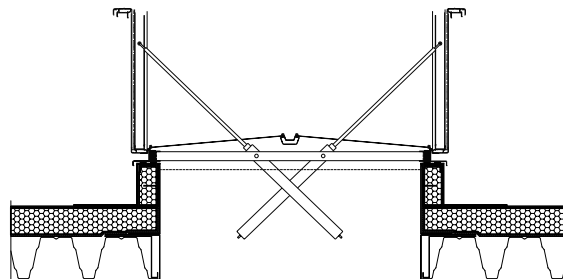




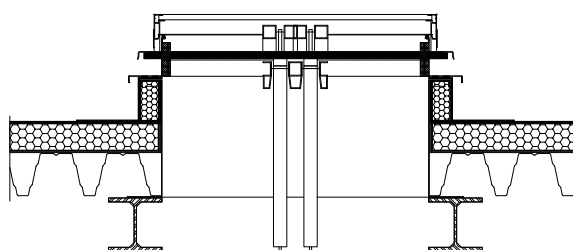
ADDITIONAL FEATURES

- available up to a maximum width x length of 2500 x 3000 mm in mm increments
- a wide range of colours
- suited to extract ventilation
- Thermal release (68 °C, 93 °C, 110 °C, 141 °C, 182 °C) and/or manual release via an alarm system
- low weight
- Good value for money
- low ambient temperature T(00) or T(-15)
- Wind load - WL1500
- Resistance to heat - B300 E
- Snow load up to 5700 N/m²
- RE 1,000 + 10,000 cycles for day-to-day ventilation
- Sound attenuation up to 28dB

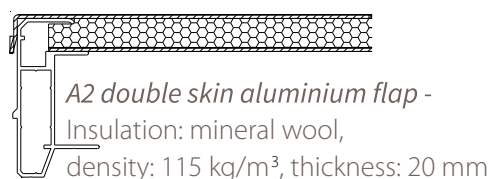
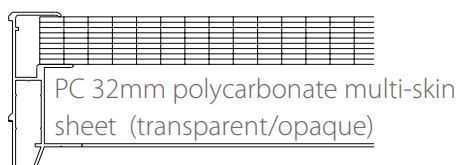
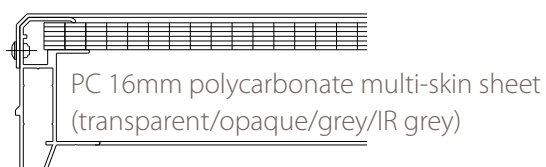
Sectional view



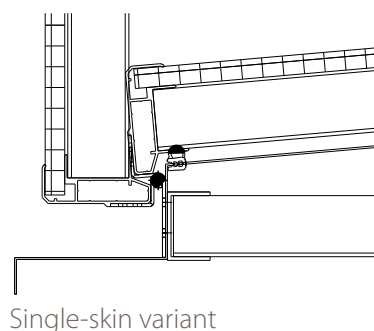
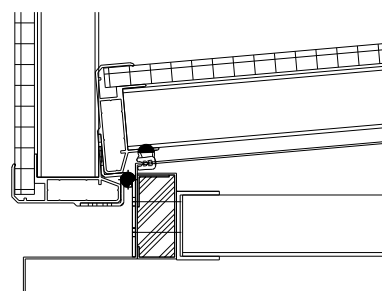
View from the side



Flap variants



Base variants





KEY FEATURES

- Specification to EnEV (Energy saving regulations)

3.1 W/m²K



Apollo
1.44 W/m²K*

-53%

U value

* With the appropriate variant

- Reduce costs for day-to-day ventilation with our **230 V actuator**
- Tested to **EN 1873**
- The Apollo is **VdS approved**
- Apollo has been tested and certified to **EN 12101-2** with all actuator types
- **Fall-through proof over many years**
Tested to GS-BAU-18 when closed
- The ventilator is notable for its **Low weight**
- **Durable**
all flap components are manufactured from high-quality aluminium
- Apollo is available in **mm increments** for order

