



STOPLINE

FIRE RATED GLAZING

AS1530.4



-/60/-

Add value to your project by providing aesthetically pleasing fire windows, which allow maximum light into the room. Stopleveline -/60/- fire windows are also available as double glazed units for energy efficiency.

Stopleveline -/60/- fire windows provide the largest approved sizes on the market, spanning large openings and are a cost effective solution for projects large and small. Stopleveline fixed fire rated windows come in array of shapes and sizes to meet virtually any requirement and have been incorporated in many projects across Australia.

Partnered with Vetrotech Saint-Gobain, our complete range of fire resistant glazing systems provide cost effective solutions for all budgets and applications.

Fire ratings up to -/60/- in accordance with AS1530.4

Slimline framing 50 x 40 mm

Available in powder coated finish

Clear Grade A Safety Glass

Double glazed units (DGU's) available

Thermally broken frame options

Stainless steel frame option available for corrosive environments, such as within 5km of the ocean





STOPLINE Fire Rated Glazing

I INTRODUCTION

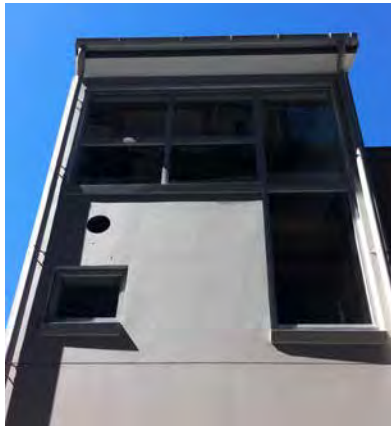
Smoke Control's commitment to provide complete solutions is reflected in the trust our clients place in us. This commitment is underlined by extensive system development, testing and approvals and supported by



Vetrotech Saint-Gobain with quality-driven production processes.



Saint-Gobain's glasses combine absolute form and function, accommodating life safety and property protection as well as multi-functionality and maximum transparency - and therefore able to integrate perfectly alongside non-fire glass types.



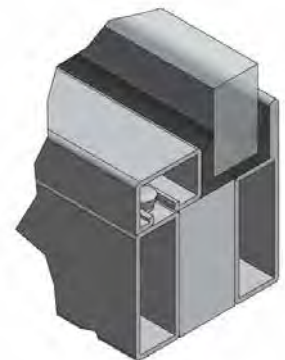
The wide range of Vetrotech Saint-Gobain is based on various technologies and production processes, which have been developed with a high level of commitment and innovation. The glass technology ranges from specialty glass and films to intumescent interlayer products. In addition to the fire performance, these glasses have inherent light transmission, sound reduction and U values. This data is of course dependant on the glazing system and is available on request.

Our fire resistant glass systems are also available etched, printed and coloured.

I COMPLIANCE

The Stopline® -/60/- fixed window system shall be supplied and installed in accordance with the deem-to-satisfy building code requirements under NCC2019 C3.4 (a)(ii)(B) and Specification C3.4 for fire rated windows in openings close to boundaries and achieve an FRL of -/60/- in accordance with AS1530.4:2014.

| Typical Section AA



CE MARK

All of Vetrotech/Saint-Gobain's fire resistant glasses are CE Marked. This means that stringent in-plant production control in addition to third party monitoring and certification is required.

In-plant production control includes regular, random sample tests in accordance with a predefined plan; initial inspection of the factory and in-plant production control (documented procedures); and, ongoing monitoring of such control, (auditing).

Our customers can be assured of consistent and high quality products.



STOPLINE Fire Rated Glazing

I FUNCTION



SIZES	
Maximum Glass sizes	
Single Frame	2760mm H x 1290mm W or 2300mm H x 1560mm W
Partition	up to 3.5m height and unlimited width appropriate expansion joints and mullions
Area	3.6 m ²
Weight	Internal: Nominally 15kg/m ² External: Nominally 30kg/m ²

INSTALLATION

In line with Smoke Control’s mission to provide customers with reliable solutions, our glazing systems are installed by our fully trained and approved national installer network.

MAINTENANCE

Annual maintenance and verification of system operation should be conducted by trained personnel in strict accordance with our document procedures.



The glass requires no special maintenance procedures. Once installed the glass should be cleaned regularly using warm water and a liquid detergent, washed down with clean water. Damaged or broken panels should be replaced, as this could affect the fire performance capabilities of the product.

What you need to know

While there is no requirement to provide tags for fire resistant window systems, Smoke Control’s best practice recommendation is to fit these tags to the window frame to ensure easy product identification and annual re-certification.

T:1300 665 471
www.smokecontrol.com.au

FIRE RATED GLAZING SYSTEM AS1530.4
 SYSTEM COMPLIANCE IS VOID IF THIS LABEL IS REMOVED

SMOKE
 NT L

FIRE RESISTANCE LEVEL: SYSTEM NUMBER:

/ /

MANUFACTURED, SPONSORED & CERTIFIED BY SMOKE CONTROL SYSTEMS PTY. LTD.



GENERAL INFORMATION

I TECHNICAL SUPPORT



Smoke Control offers obligation free technical support and pricing throughout your design & documentation stage so you can accurately prepare your budgets through value engineering.

You can also download the set of specifications, drawings & technical data from our website www.smokecontrol.com.au.

Contact our technical department to discuss your project requirements, or arrange a meeting.

Australia
1300 665 471

International
+61 2 96814000

New Zealand
+64 9 300 1980

A LITTLE MORE ABOUT US...

Smoke Control was established in 2003. We partner with leading local & international organisations to work with the new performance-based design environment - in addition to the traditional prescriptive environment - designing and installing systems to meet the challenging fire and smoke control demands of modern buildings.

Constant research & development continue to enhance our offering of fire windows, fire shutters and fire curtains, bringing the most innovative technology to both regular and unique project challenges. If you cannot find what you are looking for, please contact our team as we may already have a solution for you.

Smoke Control services all regions in Australia & New Zealand via our own offices and people. International customers can contact our Australian office by phone or email for your nearest distributor.

*We believe people deserve to work & live
in safe & beautiful buildings*

