



# VISIONEERING

## -/60/30

### GLAZED FIRE DOORS

AS1530.4



-/60/30

Sm



DtS

EN1364-3



Visioneering® represents total freedom of design with virtually any combination of fire, smoke, sound, energy, light and security requirements for you and your project

Our Australian Made fire-resistant glazing systems are manufactured using proprietary steel profiles, providing excellent durability when compared to aluminium systems. Steel windows and doors are an excellent design choice for modern and historic buildings alike.

- Fire tested in accordance with AS1530.4
- Fire and smoke containment -/60/30
- Fully concealed fixings
- Slimline profile
- Stainless steel frame option
- Clear class A safety glass
- Acoustic performance
- Security performance
- Energy performance



**VISIONEERING**  
FIRE RATED GLAZING



AUSTRALIAN MADE



**SMOKE**  
CONTROL



## VISIONEERING –/60/30 Glazed Fire Doors

### INTRODUCTION

Fire rated glazing solutions depend upon systems and are always fire tested together with frames, hardware, fixings and glass. Smoke Control offers the largest range of approvals to support the largest range of system options for almost all designs and budgets.

When selecting the right system our technical department is happy to work with you to discuss all design options with the aim of optimising the specification to achieve the right balance of performance, aesthetics, cost and compliance.

While the Visioneering® –/60/30 fire rated glazing system is a Deemed-to-Satisfy solution, it may also be used as a cost effective Performance Solution for many applications. Please contact our technical department to discuss your project specific requirements.

### COMPLIANCE

Visioneering® fire resistant fully glazed doors (FRL –/60/30) can be incorporated into the Visioneering® fire rated glazed partitions. Single and double doors are available with or without with mid height transoms and the frames can be powder coated in any specified colour.

The glasses used in the Visioneering® –/60/30 system are are high quality European Class A safety glasses and fully labelled.

PERFORMANCE DATA		
FIXED PANEL		
Characteristic	Internal (SGU)	External (DGU)
Glass thickness (nominal)	20mm	40-42mm
Sound Reduction (Rw glass only, EN140-3)	41 (-2, -2) dB	40 (-1, -4) dB
Light Transmission (EN140)	84%	77%
U-value (glass only, EN673)	4.7 W/m <sup>2</sup> K	1.1W/m <sup>2</sup> K
SHGC (G-value, EN410)	0.68	0.59
DOOR		
Characteristic	Internal (SGU)	External (DGU)
Glass thickness (nominal)	40-42mm	40-42mm
Sound Reduction (Rw glass only, EN140-3)	40 (-1, -4) dB	40 (-1, -4) dB
Light Transmission (EN140)	77%	77%
U-value (glass only, EN673)	1.1 W/m <sup>2</sup> K	1.1W/m <sup>2</sup> K
SHGC (G-value, EN410)	0.59	0.59

### What you need to know

For your safety, Smoke Control does not substitute well respected and quality glass for no name products.

Visioneering® systems are clearly labelled with the brand, fire rating and safety glass test methods.

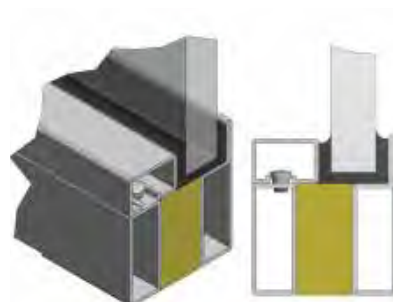
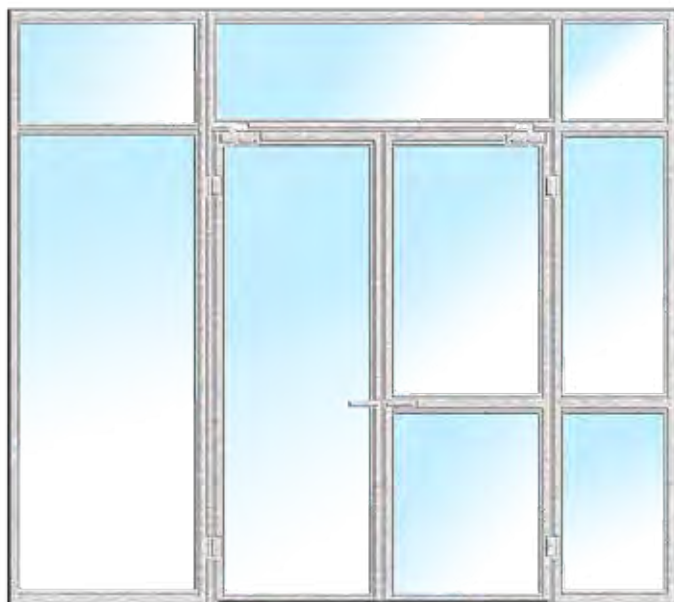
Glass identification looks exactly like this for easy verification on site;



**VISIONEERING**  
FIRE RATED GLAZING



## FUNCTION



- | Example of various Visioneering -/60/30 configurations available
- | Single door leaves also available

### SYSTEM DESCRIPTION

The Visioneering® -/60/30 system consists of high quality fire resistant clear safety glass and proprietary steel framing system. The slimline steel framing is thermally separated by the nature of its design to achieve a fully insulated fire resistance level of -/60/30 when tested as a complete system. Fully glazed fire doors incorporated into this system provide a fire resistance level of -/60/30. The framing system is available powder coated to any standard powder coat colour or available in stainless steel to your specified finish.

When used in external applications double glazed units are supplied as standard. Contact our technical department for product performance data.

### HARDWARE AND GASKETING

The system is supplied with black glazing gaskets appropriate for the required fire rating. Approved hardware must be used on the Visioneering® -/60/30 Doors. All fire doors are supplied with black smoke seal gaskets incorporated into the frame and door leaf profile as standard. Door bottom seals are optional and must be from our approved hardware list.

### INSTALLATION

In line with Smoke Control's mission to provide customers with reliable solutions, the Visioneering -/60/30 system is installed by our fully trained and approved installer network.

### MAINTENANCE

As with all Essential Services the Visioneering® -/60/30 fire resistant glazed fire doors should be maintained in strict accordance with our documented procedures by fully trained and competent technicians. Smoke Control offers a comprehensive maintenance an annual re-certification program. Contact our maintenance department for details.

### HOW TO SPECIFY

Proprietary item by Smoke Control 1300 665 471. All fire resistant glazed partitions, curtain walls, and doors shall be Visioneering® -/60/30 or -/60/30 door systems. Hardware shall be used from Smoke Control's approved hardware list with the functional requirements as per the Door Hardware Schedule. The glazing gasket shall be black and integral draft, acoustic and smoke seals shall also be black. The framing system shall be powder coated according to the finishes schedule.



## VISIONEERING –/60/30 Glazed Fire Doors

### APPLICATIONS

Visioneering® –/60/30 fire rated doors are heavy duty and ideal for use in high traffic areas and in non-fire rated applications (standard glass can be installed into the steel frames) such as;

- Universities
- Train stations
- Shopping Centres
- Nursing homes
- Airports
- Casinos

### ACCESSORIES

- Magnetic hold open
- Approved door closers
- Approved mortice locks and handles
- Door bottom smoke seals



SIZES	
<b>Maximum Door Sizes</b>	
Single door	2520mm H x 1450mm W
Double door	– 2520mm H x 1250mm W per leaf (total 2500mm W)
Area	3.10 m <sup>2</sup>
Weight 2400mm H x 1200mm W	Nominally 150 kg.

### What you need to know

While there is no requirement to provide tags for fire resistant door systems, Smoke Control's best practice recommendation is to fit these tags to the door frame to ensure easy product identification and annual re-certification.



**T:1300 665 471**  
FIRE DOOR – AS1905.1:2005

**FIRE RESISTANCE LEVEL**  
/ /

**DOORSET No:**  
[ ]

**YEAR** 20

MANUFACTURER,  
SPONSOR & CERTIFIED

**SMOKE CONTROL  
SYSTEMS PTY LTD**

[www.smokecontrol.com.au](http://www.smokecontrol.com.au)



## GENERAL INFORMATION

### I TECHNICAL SUPPORT



Smoke Control offers obligation free technical support and pricing throughout your design and documentation stage so you can accurately prepare your budgets through value engineering.

You can also download the set of specifications, drawings and technical data from our website [www.smokecontrol.com.au](http://www.smokecontrol.com.au).

Contact our technical department to discuss your project requirements, or feel free to arrange a meeting.

**Australia**  
1300 665 471

**International**  
+61 2 96814000

**New Zealand**  
+64 9 300 1980

## A LITTLE MORE ABOUT US...

Smoke Control was established in 2003. We partner with leading local and international organisations to work with the new performance-based design environment - in addition to the traditional prescriptive environment - designing and installing systems to meet the challenging Fire & Smoke control demands of modern buildings.

Constant research and development continue to enhance our offering of fire windows, fire shutters and Fire & Smoke curtains, bringing the most innovative technology to both regular and unique project challenges. If you cannot find what you are looking for, please contact our team as we may already have a solution for you.

Smoke Control services all regions in Australia and New Zealand via our own offices and people. International customers can contact our Australian office by phone or email for your nearest distributor.

*We believe people deserve to work & live  
in safe & beautiful buildings*

